

Product Description

Encircle Therapy is the first two layer graduated compression system that delivers preventative treatment to those that suffer venous insufficiencies.

Figure 1 Encircle Therapy two layer graduated compression system.



Figure 2 Method of specification is linked to the physical product, to streamline assessment and patient diagnosis.



Garments are selected based on sizing information and measurement ankle and specific health requirements using the specification method linked to the garment. The two layer composition of the garment

system provides a range of treatment options using the same inner layer, with an outer layer chosen for the degree of compression required by the wearer. The inner and outer will be produced in a range of sizes to cater for the majority of the market.

Figure 3 Two layer composition 'builds-up' the level of compression making it easier to apply than one single, much firmer layer, providing the entire compression.



The garment includes handles on either side which help a user to apply the garment, and a number of markers arranged on the garment, detectable by touch, assist the user in correctly aligning the product relative to their body.

Figure 4 Handles and positive touch markers help application of the garment and correct alignment.



This is particularly advantageous because many wearers requiring compression therapy need to apply pressure correctly, and many have failing vision due to age or underlying health problems. The touch markers also differentiate the compression classes and sizes, providing a non-visual indication of class and size.

The outer layer has a unique closure and bridge detail which provides two predetermined levels of compression. In the first configuration, when the closure is closed the garment provides full pressure. In a second configuration, the closure can be opened to provide a lower level. This is particularly important because it offers the wearer a pressure release mechanism; and is a first for any compression system. Wearers are often required to wear compression bandages or garments for a long period of time. This feature provides for some relief through temporary and partial release of the pressure without removing the garment. Our research indentified that the buildup of sustained pressure for prolong periods is a large contributor to the high level of non-compliance with existing devices.

Figure 5 Pressure relief closure and bridge allows for the garment to be applied loose and tightened once on. It also allows the wearer to partially reduce the level of compression without removing the garment; a first for compression.

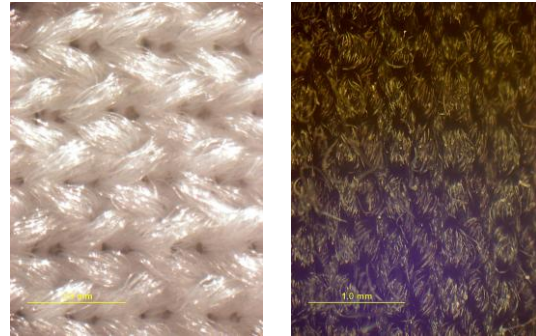


Encircle has developed new fabrics that provide excellent compression properties whilst maintaining maximum comfort for the wearer. The new fabric provides regulation of the skin and creates an excellent

environment for healing wounds or lesions on the skin. The garment regulates moisture levels and/or temperature of the skin environment through the use of absorbent and wicking materials.

Encircles' unique bi-component fabric system is constructed from two fibre types (Merino wool and ADVANSA Thermo°Cool™). These two fibres have distinct physical and chemical properties which means that moisture will be drawn through the structure to the outside where it can evaporate, keeping the skin dry.

Figure 6 Encircle bi-component fabrics absorb and wick moisture vapour and liquid moisture away from the skin



Merino provides excellent natural next-to-skin comfort for prolonged periods of use. Moisture vapour is absorbed into merino's hydrophilic interior from the high-humidity skin environment and is released (desorbed, or diffused) to the external environment. Merino also has natural thermoregulatory and anti-microbial odour-inhibiting properties which are advantageous for next to skin surfaces where wound healing is a factor.

Figure 7 Electron microscope image of merino wool fibre.

